



# Cerberus FIT FC360 – Planning Tool

siemens.com/cerberus-fit

Published by  
Siemens Switzerland Ltd 2016  
Building Technologies Division  
International Headquarters  
Gubelstrasse 22  
6301 Zug  
Switzerland  
Tel: +41 41 724 24 24

Subject to changes and errors. The information given in this document only contains general descriptions and/or performance features which may not always specifically reflect those described, or which may undergo modification in the course of further development of the products. The requested performance features are binding only when they are expressly agreed upon in the concluded contract.  
© Siemens Switzerland Ltd, 2016

“We are the trusted technology partner for energy-efficient, safe and secure buildings and infrastructure.”

Our world is undergoing changes that force us to think in new ways: demographic change, urbanization, global warming and resource shortages. Maximum efficiency has top priority – and not only where energy is concerned. In addition, we need to increase comfort for the well-being of users. Also, our need for safety and security is constantly growing. For our customers, success is defined by how well they manage these challenges. Siemens has the answers.

## Cerberus FIT FC360 – addressable fire control panels

### The compact panels

- Housing: 402x372x132 mm
- Batteries: max. 2x 12 Ah
- FC361-YZ with LED indicator (16 zones)



**FC361-ZZ**  
Order no.: S54433-C112-A1

**FC361-YZ**  
Order no.: S54433-C110-A1

### The comfort panels

- Housing: 402x372x211 mm
- Batteries: max. 2x 25 Ah
- FC361-YA with LED indicator (16 zones)



**FC361-ZA**  
Order no.: S54433-C111-A1

**FC361-YA**  
Order no.: S54433-C109-A1

- Shared properties**
- Total current capacity: max. 2.5 A
  - 1 loop or 2 stubs
  - Number of addresses: max. 126
  - 4 programmable inputs/outputs (DC 24 V/max. 0.1 A and 0.2 A in total)
  - 3 programmable potential-free relay outputs (DC 60 V/max. 2.0 A)
  - 2 collective sounder circuits (DC 24 V/max. 0.5 A)
  - Auxiliary power output (DC 24 V/max. 0.2 A)

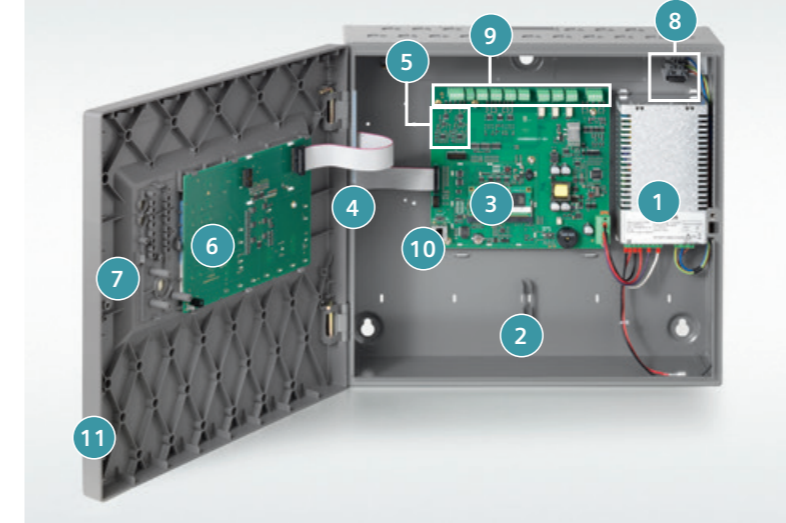
### Options



- LED indicator (16 zones) FTO3602-Z1**  
– Visual fire zone indication  
– Up to 16 fire zones  
Order no.: S54433-B117-A1
- Evacuation module (NL) FTO3601-H1**  
– Special option for The Netherlands  
– Independent control of EVAC zone  
– Acc. NEN 2575  
Order no.: S54433-B116-A1
- Key switch FCA3601-Z1**  
– Standard key switch to provide level 2 (user) access on panel  
Order no.: S54433-N113-A1
- Key switch (Nordic) FCA3603-Z1**  
– Special key switch (Nordic) to provide level 2 (user) access on panel  
Order no.: S54433-N115-A1

## Control unit

### Hardware components



#### Legend

- 1 Power supply
- 2 Space for batteries
- 3 Mainboard
- 4 Output card (4M) (optional)
- 5 Space for RS232/485 module (optional)
- 6 User interface (PMI)
- 7 Space for options:  
– Evacuation module (NL)  
– LED indicator (16 zones)  
– Key switch/key switch (Nordic)
- 8 Mains fuse
- 9 Main board connectors:  
– 2 collective sounder circuits  
– 24 V auxiliary outputs  
– 4 programmable inputs/outputs  
– 3 programmable relay outputs  
– Loop connector
- 10 Ethernet connector
- 11 Detachable door



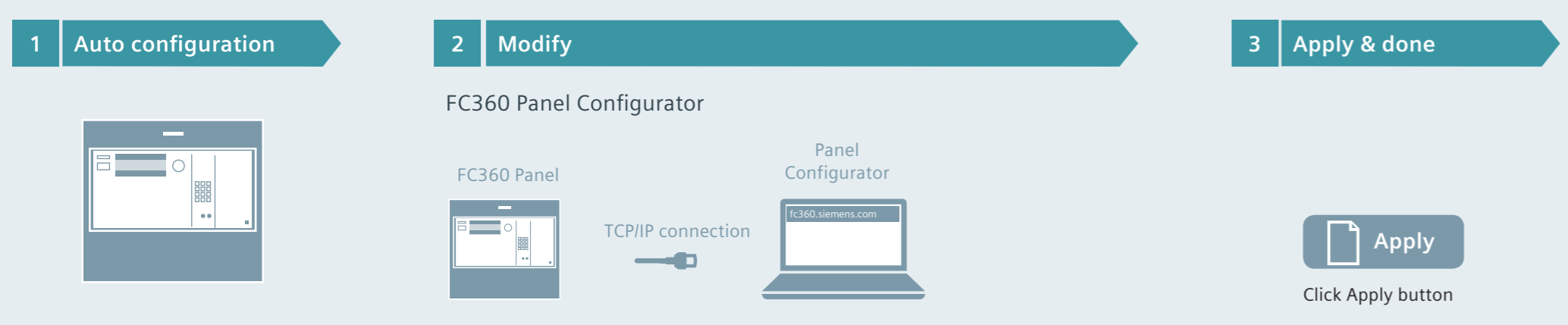
- Output card (4M) FCA3602-Z1**  
– 4 configurable monitored outputs (DC 24 V)  
– Output current per output: 1.0 A  
– Max. current of output card: 2.0 A  
Order no.: S54433-A114-A1
- RS232 module (isolated) FCA2001-A1**  
– Communication module for peripheral devices with RS232 interface (e.g. event printer DL3750+)  
Order no.: A5Q00005327
- RS485 module (isolated) FCA2002-A1**  
– Communication module for peripheral devices with RS485 interface  
Order no.: A5Q00009923
- Output module (230 V) FCA1209-Z1**  
– 1 output with potential-free relay contacts  
– Control of fire ventilation, air conditioning, elevators, doors, control installations, etc.  
– Operating current (quiescent): max. 0.1 mA  
– Relay output (ohm): AC 230 V, max. 5 A/DC 30 V, max. 5 A  
Order no.: S54400-B124-A1
- Housing FDCH21 IP65**  
Order no.: S54312-F3-A1

Note: Unit can be powered from the integral power supply or from an additional external power supply.

## FC360 Panel Configurator (online)

### Panel configuration in three easy steps.

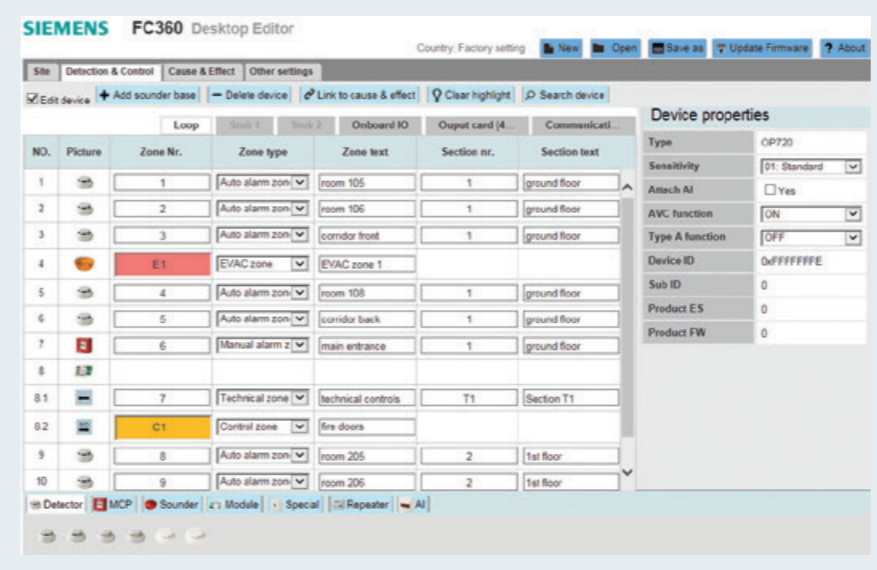
The online tool is used to configure the panel on site. The panel has an integrated Web server that can be accessed with a Web browser. No additional software is needed. The TCP/IP connection to the panel is established via the Web address fc360.siemens.com.



- Data from all connected detectors and peripheral devices are automatically configured
- Devices are automatically assigned to zones
- Instant fire protection during the construction phase

- Highlights**
- No additional software required
  - Direct and instant programming on site
  - Clear and easy-to-understand cause-and-effect matrix
  - Configuration file can be backed up on PC

## Detection and control view



The FC360 configuration tool is simple to understand and use. The connected devices are listed in a table in their order of wiring, allowing the user to easily visualize the devices as installed. Outputs and sounders can be assigned into one of 16 control or evacuation zones and an appropriate description text (e.g. “door release”) can be added for more clarity.

## Cause and effect matrix



Most systems require all alarming devices and control outputs to operate with any fire. This operation is available by default. Where more complex controls are required, the FC360's unique cause-and-effect matrix makes any required changes easy and logical.

## FC360 Desktop Editor (offline)

The FC360 Desktop Editor is a tool for viewing the system's configuration offline as well as making text or cause-and-effect changes. In addition, the tool provides installers with self-learning opportunities where they can create their own “virtual” system. This quickly builds solid expertise and experience and reduces training costs and effort.

- Highlights**
- Offline view of configuration
  - Modification of customer texts and cause and effect
  - Self-learning opportunities by creating a virtual set up



# Cerberus FIT FC360 – compatible C-NET devices

**Shared properties**

- Total current capacity: max. 2.5 A
- 1 loop or 2 stubs
- Number of addresses: max. 126
- 4 programmable inputs/outputs (DC 24 V/Imax 0.1 A and 0.2 A in total)
- 3 programmable potential-free relay outputs (DC 60 V/Imax. 2.0 A)
- 2 collective sounder circuits (DC 24 V/Imax. 0.5 A)
- Auxiliary power output (DC 24 V/Imax. 0.2 A)

**Conventional line**

Input/output module FDCIO221 – 1 monitored input  
Relay outputs:  
– 1 output  
– Relay output DC 30 V/2 A rated  
– Can be configured as monitored, but a separate DC 24 V power supply is required  
Order no.: S54312-F2-A1

Input module FDCI221 – 1 monitored input  
Order no.: S54312-F1-A1

Input/output module FDCIO222 – 4 monitored inputs  
Relay outputs:  
– 4 potential-free working/rest contacts  
Contact loading:  
– AC 250 V/4 A  
– DC 30 V/4 A  
Order no.: ASQ00002369

Input module FDCI222 – 4 monitored inputs  
Order no.: ASQ00001984

Input/output module FDCIO224 – 4 monitored inputs  
With approval on VdS extinguishing interface  
– 4 monitored inputs  
Relay outputs:  
– 4 potential-free working/rest contacts  
Contact loading:  
– AC 250 V/4 A  
– DC 30 V/4 A  
Order no.: ASQ00002369

**Shared properties FT2010 and FT2011:**

- Backlit display with plain text (6 lines of 40 characters each)
- Power supply and communication (individual address) via C-NET, additional DC 24 V feed possible
- 207x282x79 mm (HxWxD)
- Max. 3 FT2010/FT2011 per FC361

**Alarm equipment (audible/visible)**

Detector base DB721 – Screw clamp terminals  
Order no.: S54319-F11-A1

Detector base DB722 – Screwless terminals – Integrated rubber seal  
Order no.: S54319-F19-A1

Sounder base FDB221  
Order no.: ASQ00001664

Sounder base flat FDB222  
Order no.: S54319-F1-A1

Sounder base DB5720  
Sound level: 88 dBA/1 m  
Order no.: S54319-F5-A1

Sounder interbase (C-NET) DB5721  
Sound level: 89 dBA/1 m  
Order no.: S54372-F13-A1  
(Picture shows product with blanking plate BP220)

Sounder interbase with supplementary optical indication (C-NET) DB5729  
Sound level: 89 dBA/1 m  
Color: Red flash color  
Order no.: S54372-F14-A1

Sounder beacon interbase DB5728  
Sound level: 93 dBA/1 m  
Beacon settings: 0-1, 5-2, 4 and C-3-5  
Color: white flash color  
Order no.: S54372-F14-B1

Alarm sounder FDS221-W  
Sound level: 99 dBA/1 m  
Order no.: ASQ00006711

Alarm sounder FDS221-R  
Sound level: 99 dBA/1 m  
Color: Red flash color  
Order no.: ASQ00004117

Alarm sounder with supplementary optical indication FDS229-R  
Sound level: 99 dBA/1 m  
Color: Red flash color  
Order no.: ASQ00023093

Alarm sounder with supplementary optical indication FDS229-A  
Sound level: 99 dBA/1 m  
Color: Amber flash color  
Order no.: ASQ00023092

Alarm indicator (addressable) FDCAI221  
Order no.: S54370-F10-A1

**Manual call points and accessories**

Manual call point FDM221  
Standard, available in different colors

Manual call point FDM225  
Resettable, available in red, and can be used for flush mounting

Manual call point FDM226  
Resettable and IP66, available in red

Manual call point FDM231-RP  
Standard, available in red

Manual call point FDM224  
IP44 or IP64, with direct operation, available in different colors

Manual call point FDM223  
IP44 or IP64, with indirect alarm actuation, available in different colors

Manual call point with resettable plastic element FDM225-RP  
Order no.: ASQ00012020

Manual call point with resettable plastic element incl. back box FDM226-RP  
Order no.: ASQ00013436

Manual call point complete  
Order no.: S54311-F11-A1

Manual call point with glass plate FDM225-RG  
Order no.: ASQ00013434

Manual call point with glass plate incl. back box FDM226-RG  
Order no.: ASQ00013435

Electronic switching unit FDM221  
Order no.: ASQ00002451

Electronic switching unit incl. key FDM231  
Order no.: S54311-B14-A1

Electronic switching unit FDM224  
Order no.: ASQ00009392

Electronic switching unit FDM223  
Order no.: ASQ00003087

Housings with glass and key (FDM224 and FDM223):  
Housing red FDMH293-R  
Order no.: ASQ00004023  
More color options (yellow, green, blue and orange) are available  
Housing red FDMH297-R  
Order no.: S54311-B7-A1

Accessories:  
Protective cover FDMC291  
Order no.: ASQ00001644

Accessories:  
Back box FDMH295-R  
Order no.: ASQ00013437

Accessories:  
Protective cover FDMC295  
Order no.: ASQ00013440

Accessories:  
Back box with holes and grommet FDMH295-S  
Order no.: ASQ00013438

Accessories:  
Protective cover FDMC295  
Order no.: ASQ00013440

Accessories:  
Back box red FDMH231-S-R  
Order no.: S54311-B12-A1

Accessories:  
Screwed cable gland M20 x 1.5  
Order no.: ASQ00004478

Accessories:  
Back nut M20  
Order no.: ASQ00004479

**Detector base accessories (DB721, DB722)**

Detector base seal RS720  
Order no.: S54319-F8-A1

Designation plate FDBZ291  
Order no.: ASQ00002621

Detector locking device LP720  
Order no.: S54319-F9-A1

Base attachment BA720  
Order no.: S54319-F20-A1

Base attachment wet BA721  
Order no.: S54319-F29-A1

Detector heating FDBH291  
Order no.: ASQ00004439

Protection cage DBZ1194  
Order no.: BPZ:4677110001

**Sounder interbase accessories (DB5721, DB5728, DB5729 with detector base DB721 or DB722)**

Interbase seal RS721  
Order no.: S54319-F32-A1

Blanking plate BP720  
Order no.: S54372-B12-A1

Designation plate DBZ1193A  
Order no.: BPZ:4864330001

Detector locking device LP720  
Order no.: S54319-F9-A1

**Alarm sounder accessories (FDS221-x, FDS229-x with detector base FDB221 or FDB222)**

Sealing element FDBZ295 (only with base FDB221)  
Order no.: S54319-F10-A1

Base attachment FDB291  
Order no.: ASQ00001603

Base attachment wet FDB295  
Order no.: S54319-F21-A1

Designation plate FDBZ291  
Order no.: ASQ00002621

Designation plate DBZ1193A  
Order no.: BPZ:4864330001

Detector locking device FDBZ293  
Order no.: ASQ00005035

# Cerberus FIT FC360 – application examples



Nursing home      Hotel      Shared housing      Shops in shopping center      Small industrial site      School

**Benefits at a glance**

- **Increased life safety** – backed by fastest, most reliable fire detection and alarming
- **Satisfied and relaxed occupants/tenants** – never disturbed by false alarms or unnecessary evacuations
- **Compliant with legal norms and regulations** – LPCB (Loss Prevention Certification Board) approved to EN54 parts 2 and 4 as well as EN54-13 system approval
- **Low commissioning and maintenance costs** – configuration changes made easy with embedded configuration tool

# ASA parameter sets for diverse application areas

**Faster fire detection with ASAtechnology**  
Heat detectors are needed in many areas due to the potential for false alarms. However, heat detection provides significantly less protection. The ASA neural fire detector OOH740 with its dual optical chamber design allows advanced smoke detection to be offered where others can only offer heat detection.

- 1 Two IR light sources
- 2 Dispersion of light rays by smoke particles
- 3 IR receiver
- 4 Patented labyrinth
- 5 Temperature sensors
- 6 CO sensor for OOH740

Contact your local sales office for more information or application support.

## Selectable parameter sets:

<p><b>Fast Response</b></p> <ul style="list-style-type: none"> <li>• Areas where speed of detection is the priority and where there are few false alarm sources</li> <li>• EN 54-27-approved detection for air-handling ducts in conjunction with air sampling smoke detection FDBZ290</li> </ul>	<p><b>Balanced</b></p> <ul style="list-style-type: none"> <li>• Provides a good balance between effective smoke detection and false alarm resistance</li> <li>• Ideal for spaces where transitory false alarm sources are expected</li> <li>• Application examples: standard hotel and nursing home bedrooms</li> </ul>	<p><b>Suppression</b></p> <ul style="list-style-type: none"> <li>• Areas requiring smoke detection where a high number of false alarm sources may be expected, including steam, cooking, cigarette smoke, aerosols, welding, etc.</li> <li>• Application examples: kitchens, workshops</li> </ul>	<p><b>Separate CO sensor</b></p> <ul style="list-style-type: none"> <li>• Provides fire-independent detection of toxic carbon monoxide due to incomplete oxidation from exhaust gases, defective gas heating, cooking appliances or chemical and production-related processes</li> <li>• Application examples: hotel garages, nursing homes, shared housing</li> </ul>
---	---	---	--